



victor Integration Component

Installation and configuration guide

AC2000SE v7.0

Notice

The information in this manual was correct at the time of publication. Tyco Security Products reserves the right to modify this product. All specifications are subject to change without notice.

© Copyright 2015

Under copyright laws, the contents of this manual may not be copied, photocopied, reproduced, translated or reduced to any electronic medium or machine-readable form, in whole or in part, without prior written consent of Tyco Security Products. All Rights Reserved.

Trademarks

The trademarks, logos, and service marks displayed on this document are registered in the United States (or other countries). Any misuse of the trademarks is strictly prohibited and Tyco Security Products will aggressively enforce its intellectual property rights to the fullest extent of the law, including pursuit of criminal prosecution wherever necessary. All trademarks not owned by Tyco Security Products are the property of their respective owners, and are used with permission or allowed under applicable laws.

Product offerings and specifications are subject to change without notice. Actual products may vary from photos. Not all products include all features. Availability varies by region. Contact your sales representative for more information.

Licence information

Your use of this product is governed by certain terms and conditions.

Support

If you require technical assistance using CEM products, please contact the CEM Support team using the following telephone number:

Telephone: +44(0)2890 456656

Email: cem.support@tycoint.com

- Please provide our support engineers with as much information as possible. This may include:
- Site name
- Product name and model
- CEM software version
- Description of the problem

Publication Date

25th September 2015

Contents

1 Introduction to victor Site Manager	1
1.1 About this Guide	1
1.2 Overview of CEM victor Integration	1
1.2.1 Installing CEM victor Integration component	2
1.2.2 Overview for a victor Unified Client only workstation	3
1.3 Installation Prerequisites	3
1.3.1 Applying licence to AC2000 server (CDC0)	4
1.3.2 Enabling the CEM victor Integration service	5
2 Installing CEM victor Integration Component	7
2.1 Prerequisites	7
2.2 Installing CEM victor Integration Component	7
3 Configuring AC2000	11
3.1 Adding Alarms Using CEM victor Integration Component	11
3.1.1 Alarm codes	14
4 Confirming Successful Integration	15
4.1 Confirming Successful Integration	15
4.2 Configuring Devices in victor Unified Client	16
Appendix A: victor Unified Client - Mapping Alarms	17
Appendix B: Mapping the Reader (Optional)	25
Appendix C: Upgrading the CEM victor Integration to align with an update to victor version 4.7	29
Appendix C: Overview	29
• Uninstalling previous CEM victor Integration version 4.6 or 4.7	29
3. Integrating AC2000 functionality with victor Unified Client	29
6. Installing new CEM victor Integration	29

Chapter 1

Introduction to victor Site Manager

Note

victor is a management interface produced by American Dynamics (AD), that enables a user to manage live/recorded video from multiple DVR types.

The primary goal of **victor Site Manager** (AD) with the **CEM victor Integration** component is to display live video on one of the monitored **victor Unified Client** screens, when specific alarms occur on particular AC2000 devices.

Alarms logged on the AC2000 system can be sent to victor, including, alarms from 3rd party intruder systems such as DSC, Galaxy, Perimeter or Fire systems.

It is also possible to send commands such as **Unlock Door**, **Lock Door** and **OneShot Door** to AC2000 card readers from the **victor Unified Client** (AD).

1.1 About this Guide

This guide describes how to:

- Install the **CEM victor Integration** component
- Configure AD **victor Site Manager** to use **CEM victor Integration**

1.2 Overview of CEM victor Integration

The **CEM victor Integration** component can be installed on either:

- A workstation with an AD **victor Site Manager** and an AD **victor Unified Client** installed on it.
- A workstation with an AD **victor Unified Client** installed on it and connected to an AD **victor Site Manager**.

Please refer to Figure 1 and Figure 2 for an installation overview for each scenario.

1.2.1 Installing CEM victor Integration component

For the installation scenario given in this manual, it is assumed that **victor Site Manager** and **victor Unified Client** are both installed on the same workstation.

To install the **CEM victor Integration** component, a number of steps must be performed.

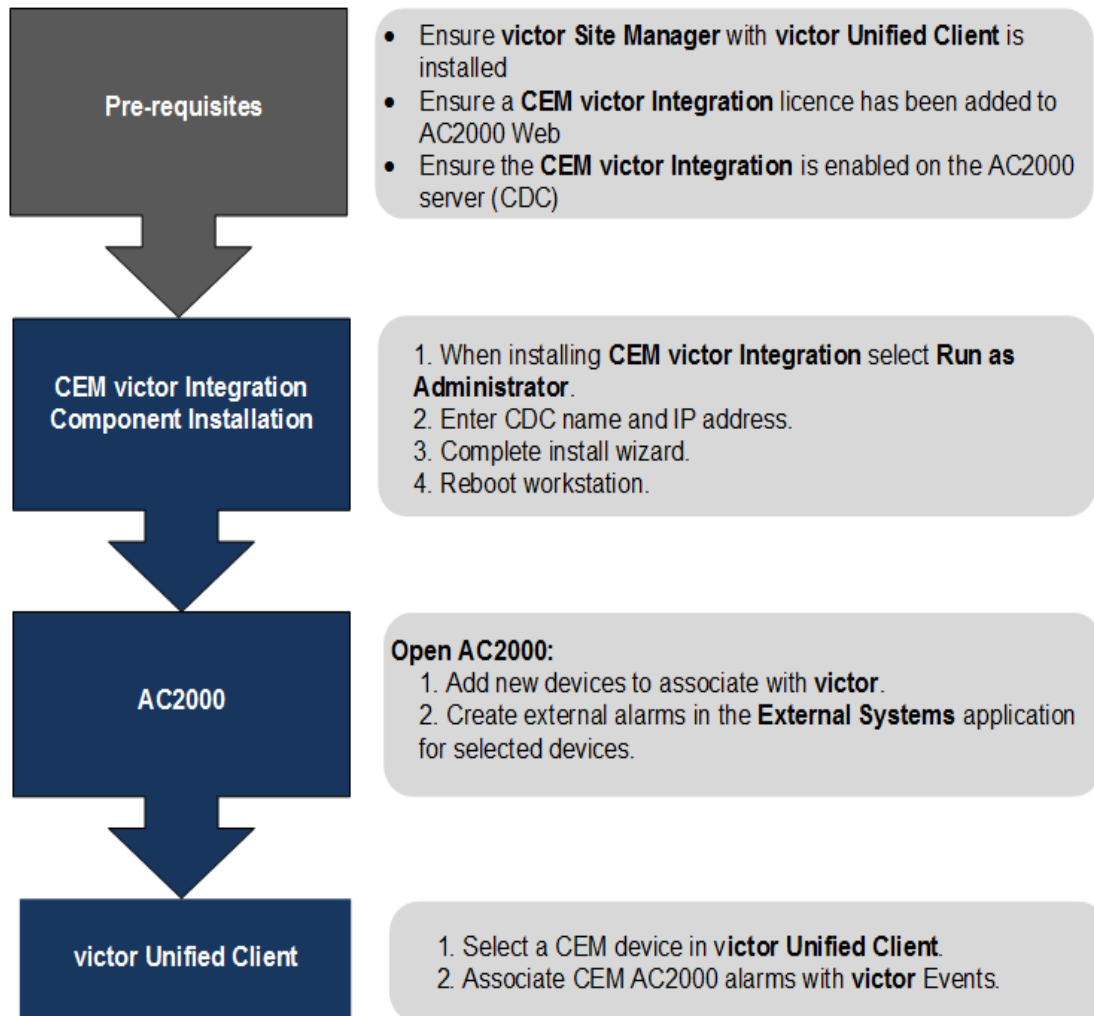


Figure 1 CEM victor Integration

1.2.2 Overview for a victor Unified Client only workstation

The graphic below describes the installation procedures, when the **victor Site Manager** and **victor Unified Client** are installed on different workstations.

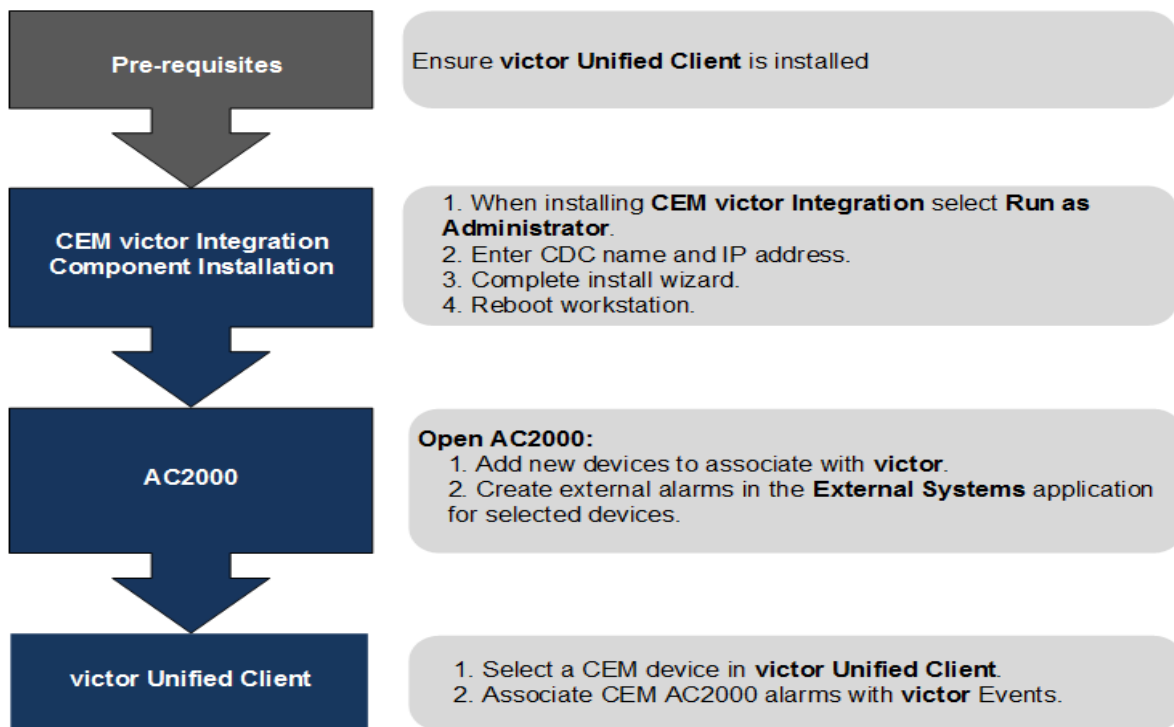


Figure 2 CEM victor Integration - where **victor Site Manager** is on a different workstation

1.3 Installation Prerequisites

1. Ensure that **victor Unified Client** and **victor Site Manager** are both installed, following installation instructions from the relevant victor product manuals.
2. A **CEM victor Integration** licence has been added to AC2000 via **AC2000 WEB**. (Please refer to Section 1.3.1)
3. Ensure that the **CEM victor Integration** service is enabled. (Please refer to Section 1.3.2)
4. Check that all services are stopped in **victor Site Manager** (Please refer to Section 7)

1.3.1 Applying licence to AC2000 server (CDC0)

A **victor** licence must be obtained and typed in the AC2000 Web Pages.

1. Log into **AC2000 WEB**.
2. Navigate to **AC2000 Setup | Licensing**.



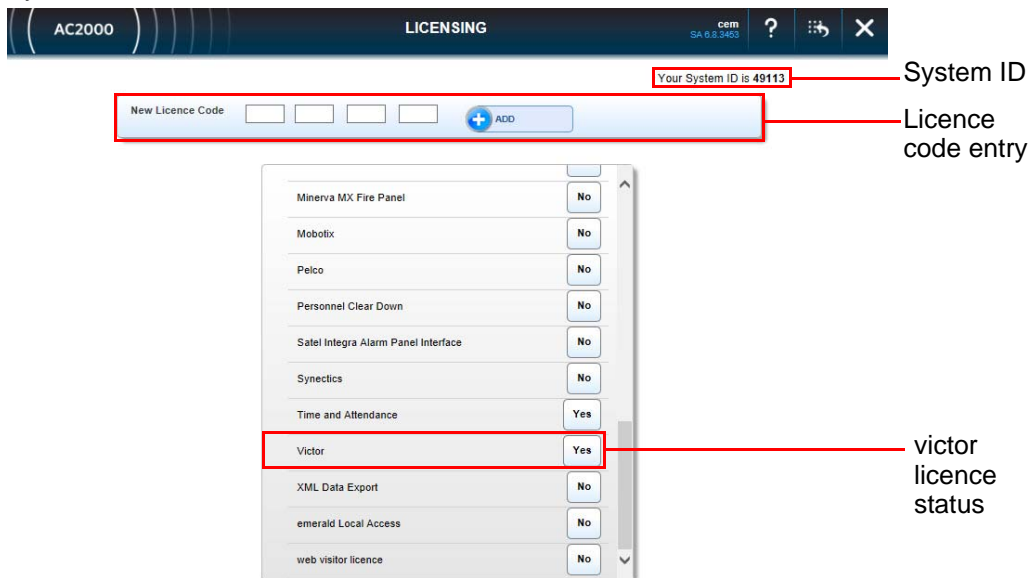
Figure 3 Licensing code entry function

3. In the **Licensing** application, type the **victor** licence code and click **Add**.

Note

If no licence has been obtained at this point, call CEM Support, quoting your **System ID** number to receive the appropriate **New Licence Code**. The **System ID** is displayed at the top right of the **Licensing** application interface.

4. Once the Licence code has been applied, scroll the list to check that **'Yes'** is displayed beside the **victor** integration. Also a message notifying the user that the licence has been successfully applied is displayed beside the **Add** button.



Integration	Status
Minerva MX Fire Panel	No
Mobotix	No
Pelco	No
Personnel Clear Down	No
Satel Integra Alarm Panel Interface	No
Synectics	No
Time and Attendance	Yes
Victor	Yes
XML Data Export	No
emerald Local Access	No
web visitor licence	No

Figure 4 Adding licence to the CDC

5. Exit **AC2000 WEB**.

1.3.2 Enabling the CEM victor Integration service

Warning

A licence must be purchased before integrating a 3rd party system with AC2000. Please contact CEM Support or CEM Sales for further details.

Before using the integration in the AC2000 system, it must be enabled on the CDC by performing the following steps:

1. Open a **SSH** terminal emulator connection (such as PuTTY) with the CDC.
2. Login as user: **root**
3. Type the letter **I** in the command line and press return to display the **Integrations menu**.

```
Integrations menu:
1)AD TVR                      2)AD Hybrid DVR
3)AD NTLX and VE              4)Airport Edition
5)BACnet or Minerva MX Fire panels 6)Bosch
7)Contact ID Interface        8)DSC PowerSeries
9)Galaxy                      10)Genetec
11)IndigoVision SMS4          12)MatriVideo
13)Milestone                  14)Satel Integra
15)Victor                     16)API
17)Portables subsystem
Select Integration to Set Up(or X to eXit):_
```

Figure 5 Integrations menu in terminal emulator

4. Type the option number corresponding with **victor** (15 in the example displayed above) and press **Return** to run the enabling script.
5. Press **Return** when prompted to display the integrations menu again.
6. Type **X** and press **Return** to exit integrations menu.
7. Type **L** and press **Return** to log out of terminal emulator session.

Chapter 2

Installing CEM victor Integration Component

2.1 Prerequisites

Before installation of the **CEM victor Integration Component**, it is essential to ensure that:

- Each step is performed as detailed in Installation Prerequisites on page 3
- The same user account is used when installing **CEM victor Integration** as used during **victor Unified Client** installation

2.2 Installing CEM victor Integration Component

1. Insert the installation **CEM victor Integration** CD into the CD-ROM drive. The setup program will automatically start. If the setup program does not automatically start, open Windows Explorer and navigate to the CD drive.
2. Right-click **CEMVictorSetup.exe** and select **Run as Administrator**.
3. Click **Next** to start the installation wizard.

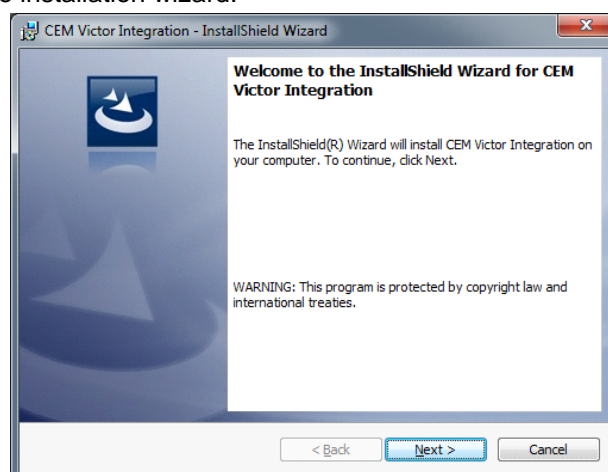


Figure 6 CEM victor Integration InstallShield Wizard

4. In the **CDC Information** window:
 - i. Type correct CDC details in the **CDC Name** field (AC2000's server - default CDC0).
 - ii. Type the correct IP address in the **IP Address** field.

- iii. Click **Next** to continue.

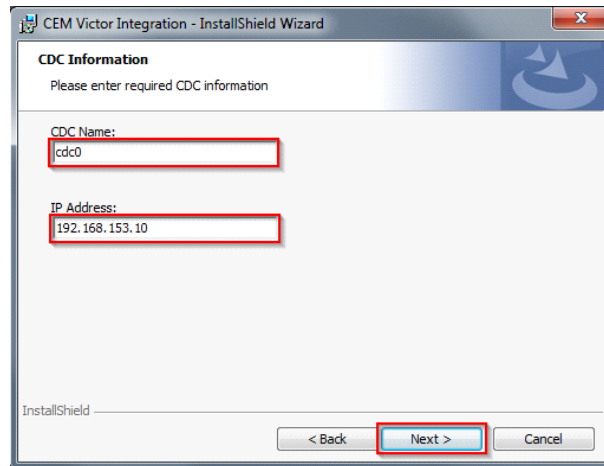


Figure 7 CDC Information window

5. In the **Database Server** window, ensure that **Windows authentication credentials of current user** is selected. Click **Next** to continue.

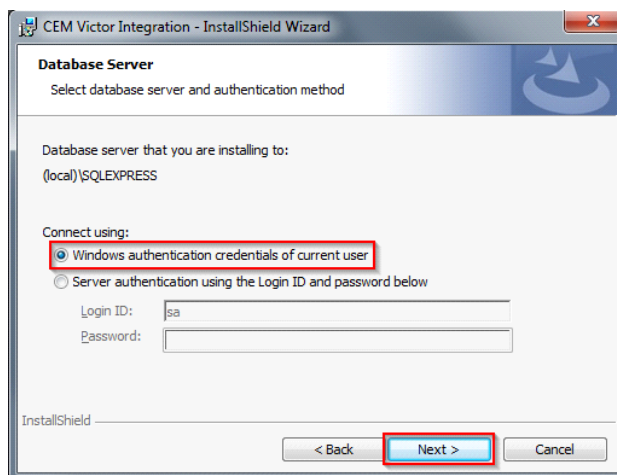


Figure 8 Database Server window

- On the **Ready to Install the Program** window, click **Install** to begin the installation.

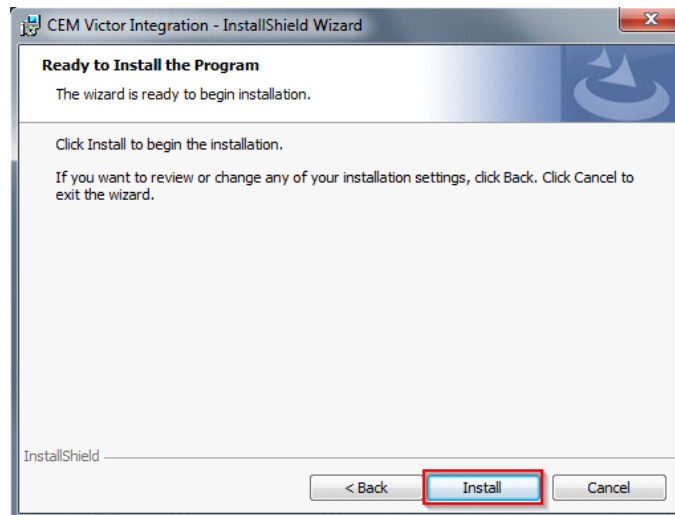


Figure 9 Ready to Install the Program window

- On the **InstallShield Wizard Completed** window, click **Finish** to complete the installation. **CEM victor Integration** is now installed.

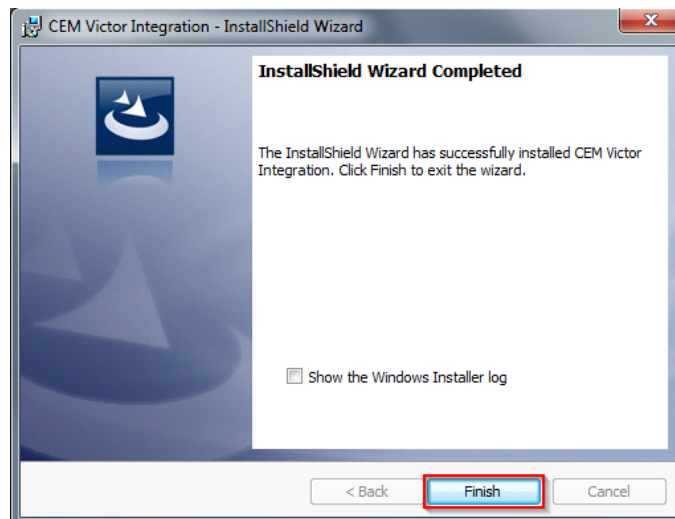


Figure 10 InstallShield Wizard Completed

Chapter 3

Configuring AC2000

Before alarms can be added in AC2000 using **CEM victor Integration Component**, card reading devices must be present and configured in AC2000.

3.1 Adding Alarms Using CEM victor Integration Component

If **Device Configuration | External Systems** is not showing by default on the AC2000 **Floatbar**, then it is not assigned to your user account. It is made visible using the **User Options** application in **Administration**:

1. Open **AC2000**.
2. On the AC2000 **Floatbar**, select **Administration | User Options**.

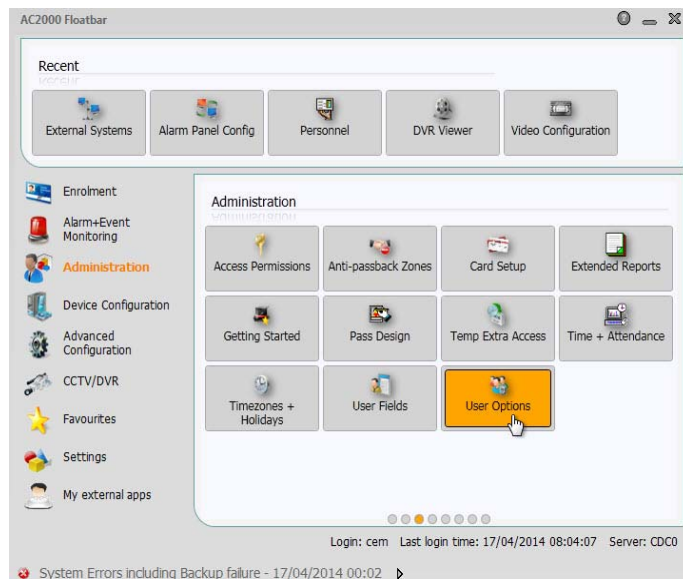


Figure 11 Locating User Options in Floatbar

3. In the **User Options** interface displayed, select your user account from the **User panel**.

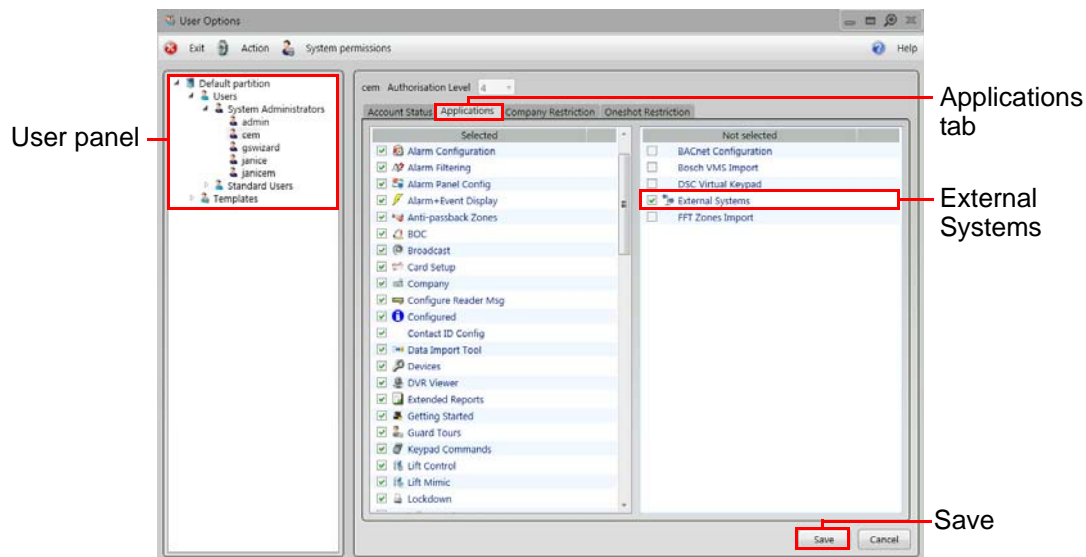


Figure 12 Assigning Applications to the user

4. Select the **Applications** tab.
5. In the **Not Selected** panel select **External Systems** and click **Save**.

External Systems will now be visible in AC2000 **Floatbar**. Perform the following actions:

1. Open **AC2000**.
2. In the **Categories** panel click **Device Configuration**.
3. In the **Device Configuration** panel select **External Systems**.

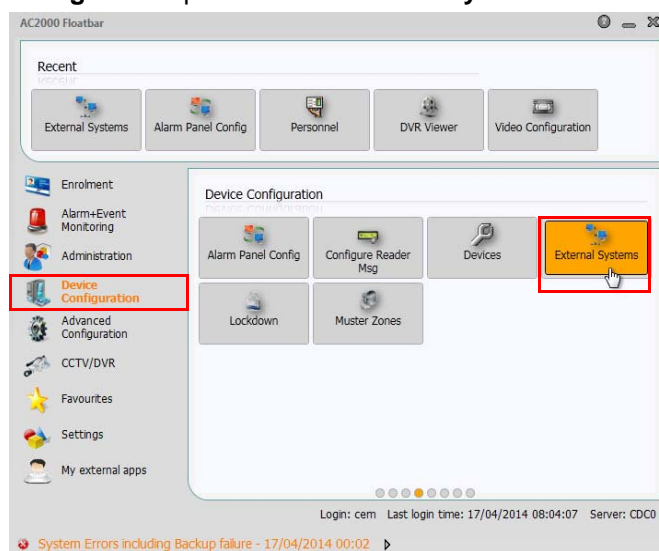


Figure 13 External Systems application

4. In the **External Systems** interface, select **Victor** from the **Select System** drop down list.

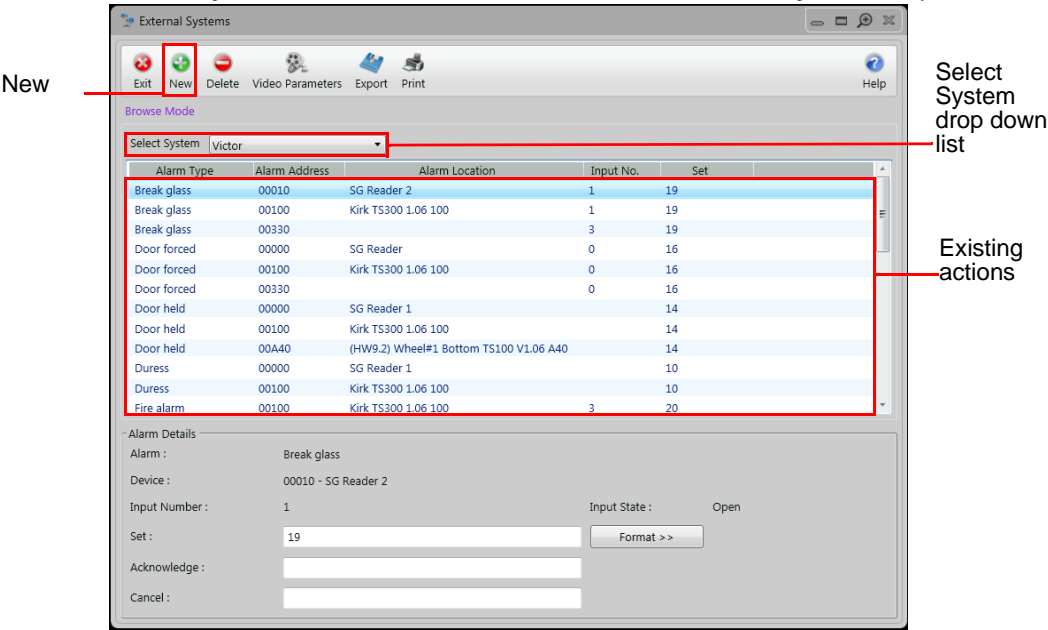


Figure 14 Adding a new action

5. Click **New** to display the **Add Action** interface.

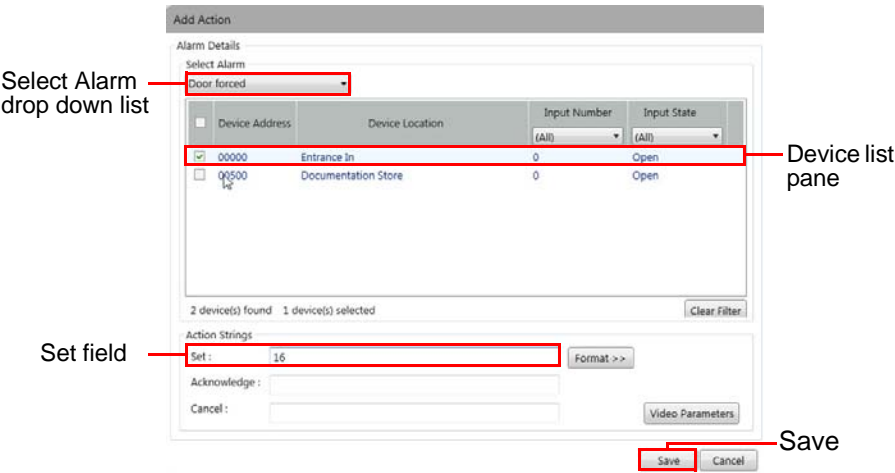


Figure 15 Add Action Interface - example

6. From the **Select Alarm** drop down list, choose the alarm type e.g. **Door forced**:

Note

The reader in question, must already be configured with an input for the alarm type selected in AC2000 **Devices**.

- i. From the **Device list pane**, select the device to assign the alarm to by placing a tick in the checkbox.
- ii. Type the correct alarm code number in the **Set** field. (See Table 1 on page 14).

Note

The example in Figure 15 shows a **Door forced** alarm assigned to the '**Entrance In**' device with the **Action String** set to Alarm code 16. Table 1 on page 14 lists the Alarm codes which can be entered in **External Systems** for each alarm type mapped using the **victor** client.

7. Click **Save** to complete the alarm configuration using the **victor** integration component.

3.1.1 Alarm codes

Alarm code	Description
Access control Alarms	
10	Duress Alert
11	Tamper Alert
12	Lost Stolen Alert
13	Offline Alert
14	Door Held Alert
15	Panic Alert
16	Door Forced Alert
17	General Alert
18	Pin Alert
19	Break Glass Alert
20	Fire Alert
Intruder Alarms	
30	SIA Tamper Alert
32	SIA Holdup Alert
34	SIA Panic Alert
36	SIA Burglary Alert
38	SIA Galaxy Alert
Generic Reader Alerts (via victor alarm priority)	
0	Critical Alert
1	Very High Alert
2	High Alert
3	Medium High Alert
4	Medium Alert
5	Medium Low Alert
6	Low Alert
7	Very Low Alert

Table 1: Alarm codes for use in AC2000 **External Systems** and victor Client

Chapter 4

Confirming Successful Integration

4.1 Confirming Successful Integration

Start AD **victor Unified Client** to confirm the successful integration of CEM devices.

1. Run AD **victor Unified Client** as Administrator after initial installation. Subsequently double-click on **victor Unified Client** to open.

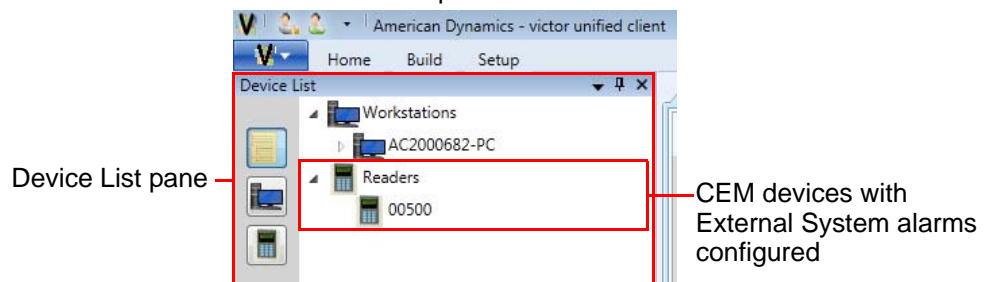


Figure 16 Device List in victor Unified Client

2. Confirm that all CEM devices with **External System** alarms configured are displayed in the **Readers** drop down list in the **Device List** pane.

Note

Only devices with alarms configured in **External Systems** are imported.

Note

If a CEM device still does not appear in the **Device List** after using **Sync Access** function, open **victor Site Manager** and stop and restart services.

3. Once imported devices appear in the **Device List**, confirm that commands are being sent to CEM devices from **victor Unified Client**:

- i. Right click on a CEM device in the **Device List** to display a list of options.

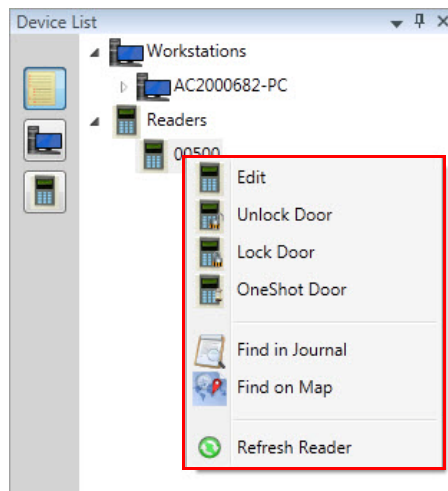


Figure 17 Device options

- ii. Select a command to send to a device, e.g. **Oneshot Door**.
- iii. Check that the command was sent to the reader.

Once testing is successfully finished, the installation and setup of the integration are complete.

4.2 Configuring Devices in victor Unified Client

All guidance regarding the mapping of **victor** actions to alarms generated by CEM devices in **victor Unified Client** can be found in the relevant **victor** instruction manual.



Important

Guidance notes in Appendix A should be treated only as a guide to configuring limited actions related to CEM devices. Please refer to the **victor** instruction manual for full instructions.

Appendix A: victor Unified Client - Mapping Alarms

To map the AC2000 alarms to **victor Site Manager** events, there are five steps:

1. Creating a Salvo.
2. Creating a Video Action.
3. Creating an Event.
4. Setting up an Event.
5. Testing the Integration.

Note

Optionally, imported readers can be displayed on a map. Please see Mapping the Readers in Appendix B for instructions.

Step 1 - Creating a Salvo

1. Start the **victor Unified Client**.

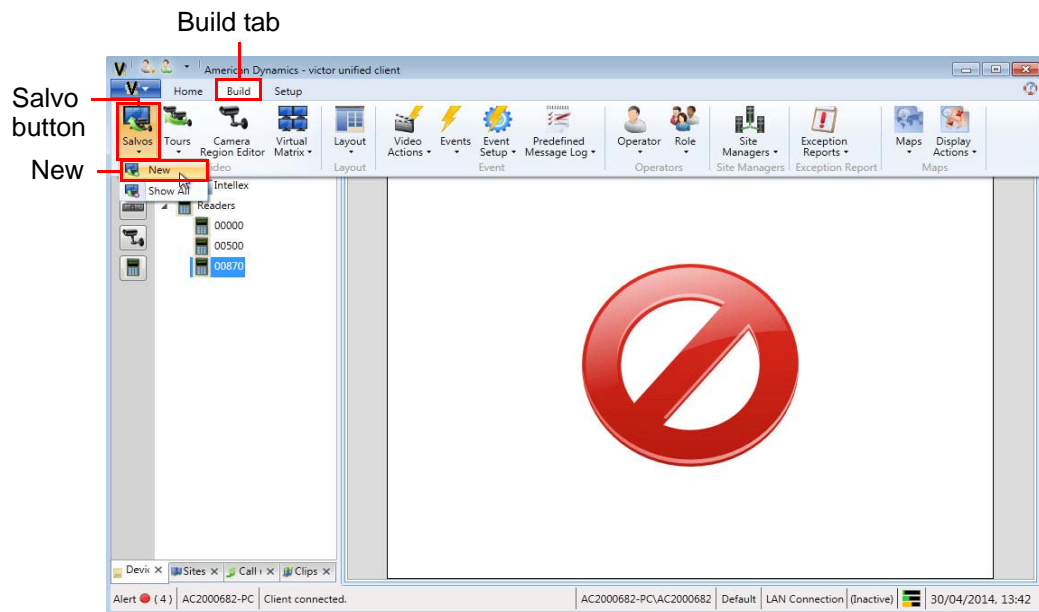


Figure 18 victor Unified Client

2. Select the **Build** tab.
3. Select the **Salvos** drop down list.

4. Select **New** to display a **New Salvo** interface.

Save and close

General pane

The screenshot shows the 'New Salvo' interface. At the top, there are icons for 'Save and close' (a floppy disk) and 'Cancel' (a red X). Below these is the 'General' pane, which contains fields for 'Name' (Door Forced Salvo - CEM Test) and 'Description' (Door Forced Salvo - CEM Test), and an 'Enabled' checkbox. Below the General pane is the 'Salvo' pane. It has tabs for 'Sites', 'Recorders', and 'Tours'. The 'Recorders' tab is selected, showing a tree view of cameras under 'Intellex'. A table on the right shows the camera layout for a 2x2 screen.

Server	Device/Tour Name	Channel	Dome	Preset	Pattern	Pane
NTLXULTRA	Camera1	0	<input type="checkbox"/>			1
NTLXULTRA	Camera2	1	<input type="checkbox"/>			2
NTLXULTRA	Camera4	3	<input type="checkbox"/>			3
NTLXULTRA	Camera3	2	<input type="checkbox"/>			4

Salvo pane

Figure 19 Adding a New Salvo

5. In the **General** pane:
 - a. Type a name for the salvo in the **Name** field.
 - b. Type a description for the salvo in the **Description** field.
 - c. Place a tick in the **Enabled** checkbox.
6. In the **Salvo** pane:
 - a. Select the **Recorders** tab.
 - b. Expand the drop down list of cameras for one of the listed recorders.
 - c. Drag and drop cameras from the **Recorder** tab (left) across into Salvo details pane (right).
7. Set a screen **Layout** for the camera display by placing a check in the **Layout** checkbox and selecting a screen layout, e.g. **2x2**.

Note

Setting a **Layout** automatically populates the **Pane** column with pane numbers to which each camera is assigned.

Layout options

☒ Layout: 2x2



Cameras selected for salvo

Server	Device/Tour Name	Channel	Dome	Preset	Pattern	Pane
NTLXULTRA	Camera1	0	<input type="checkbox"/>			1
NTLXULTRA	Camera2	1	<input type="checkbox"/>			2
NTLXULTRA	Camera4	3	<input type="checkbox"/>			3
NTLXULTRA	Camera3	2	<input type="checkbox"/>			4

Figure 20 Salvo details pane

8. The association of cameras with monitor pane numbers can be changed according to user preference. Refer to the relevant **victor** instruction manual for instructions for this option.
9. Click **Save and Close**.

Step 2 - Creating a Video Action

1. From the main **victor Unified Client** interface, select the **Build** tab.

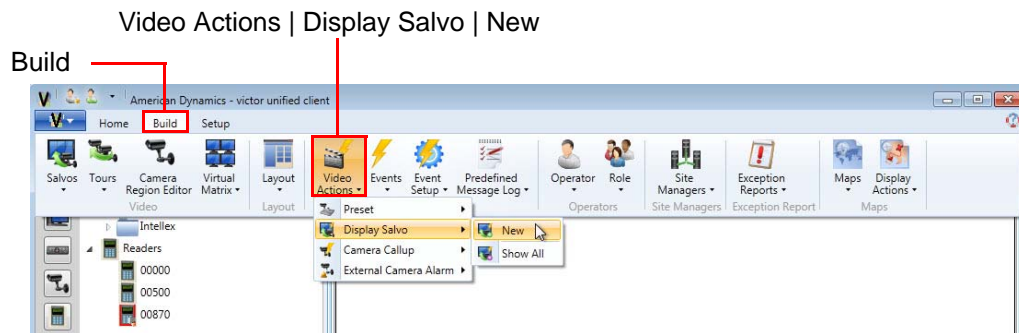


Figure 21 Adding a video action

2. Select the **Video Actions** drop down list button.
3. **Display Salvo** drop down list option.
4. Select **New** to display a **New Display Salvo Action** interface.

Save and close

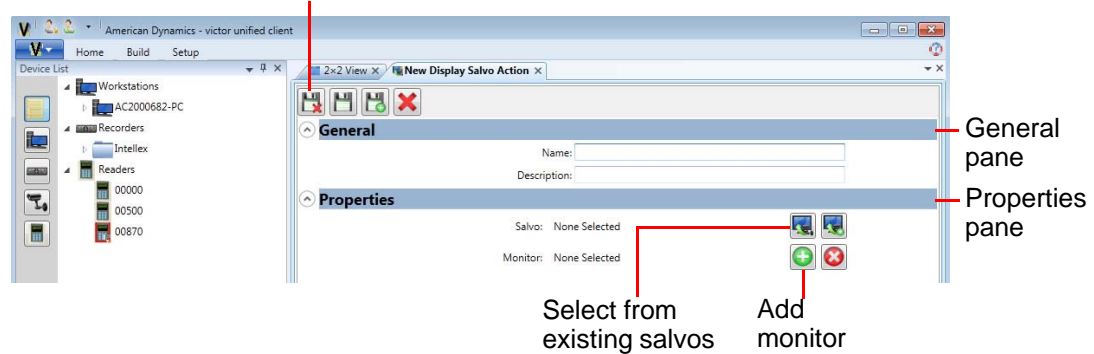


Figure 22 New Display Salvo Action interface

5. In the **General** pane:
 - i. Type a name for the Display Salvo Action in the **Name** field. For the purposes of this example, the name given is 'Video Actions - CEM Test'.
 - ii. Type a description for the Display Salvo Action in the **Description** field.

6. In the **Properties** pane:
 - i. Click **Select from existing salvos** button to display the **Object Selector** window.

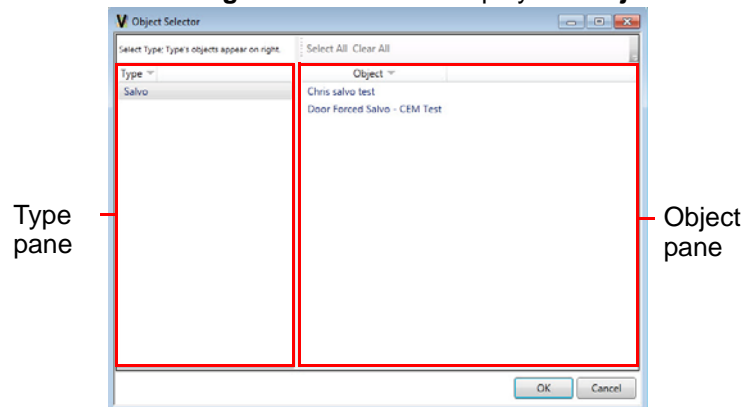


Figure 23 Object Selector window

- ii. From the **Type** pane, select **Salvo**.
 - iii. From the **Object** pane, select the salvo created in Step 1 (**Door Forced Salvo - Cem Test** in this example).
 - iv. Click **OK** to confirm selection and return to **New Display Salvo Action** interface.
7. Click **Add monitor** button to display the **Object Selector** window.

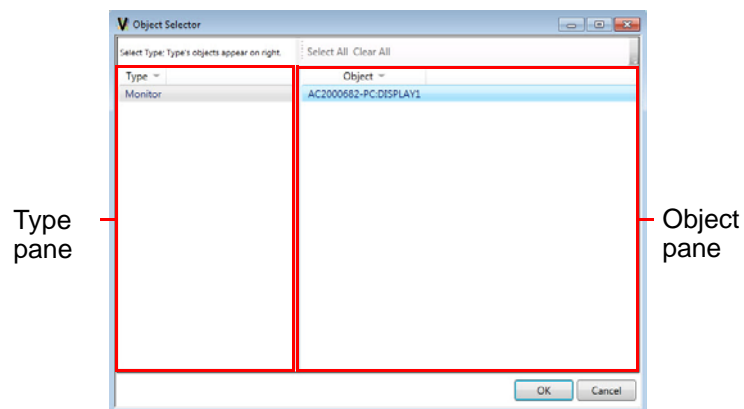


Figure 24 Object Selector window

- i. From the **Type** pane, select **Monitor**.
 - ii. From the **Object** pane, select a monitor to display the Video Action on.
 - iii. Click **OK** to confirm selection and return to **New Display Salvo Action** interface.

Save and close

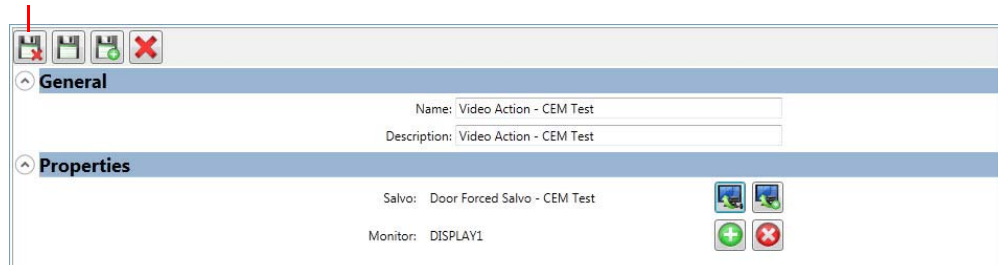


Figure 25 New Display Salvo Action interface

8. Click **Save and Close**.

Step 3 - Creating an Event

1. From the main **victor Unified Client** interface, select the **Build** tab.

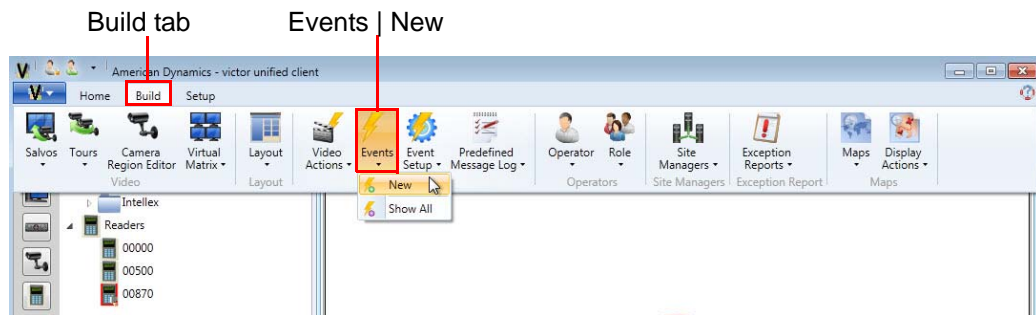


Figure 26 Adding an Event

2. Select the **Events** drop down list button.
3. Select **New** to display a **New Event** interface.

Save and close

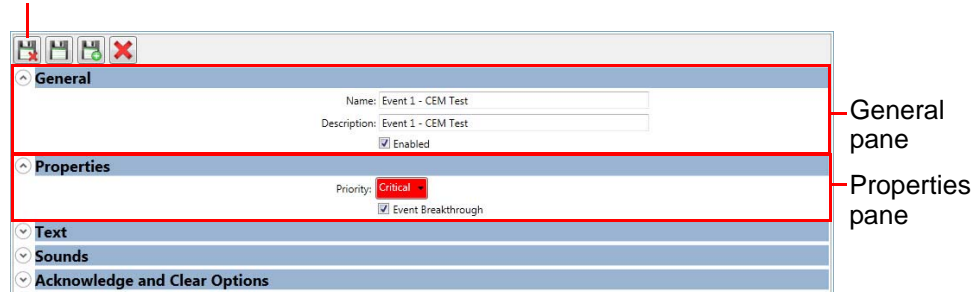


Figure 27 New Event interface

4. In the **General** pane:
 - a. Type a name for the New Event in the **Name** field. For the purposes of this example, the name **Event 1 - CEM Test** is used.
 - b. Type a description for the New Event in the **Description** field.
5. In the **Properties** pane:
 - a. From the **Priority** drop down list, select the priority which will be assigned to the incoming alarm event. This establishes the importance assigned to the incoming alarm, so that the user can easily identify a critical alarm over a non-critical alarm.
 - b. Place a tick in the **Event Breakthrough** checkbox if required.
6. Click **Save and Close**.

Note

Other configurable options are available in the **Text**, **Sounds** and **Acknowledgements** expandable panes. Functions and options not specifically discussed in this Appendix, are not supported by CEM Systems. Reference should be made to AD **victor** documentation.

Step 4 - Setting up an Event

1. From the main **victor Unified Client** interface, select the **Build** tab.

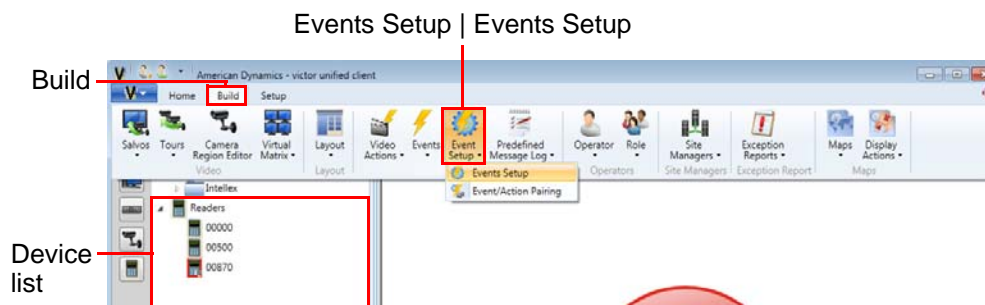


Figure 28 Opening Events Setup

2. Select the **Event Setup** drop down list button.
3. Select **Events Setup** to display the **Events Setup** interface.

Save and close

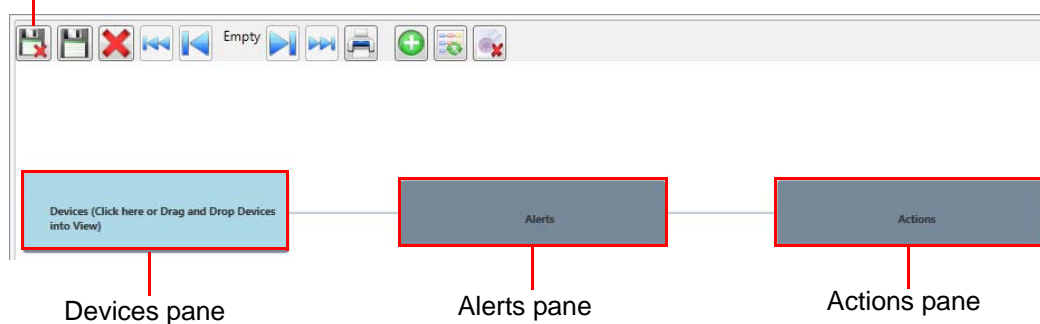


Figure 29 Events Setup interface

4. Drag and drop a reader from the **Device List** to the **Devices** pane.

Note

A reader is only available for selection in the **Device List** of **victor Unified Client**, if it has an association in the **External Systems** application in AC2000.

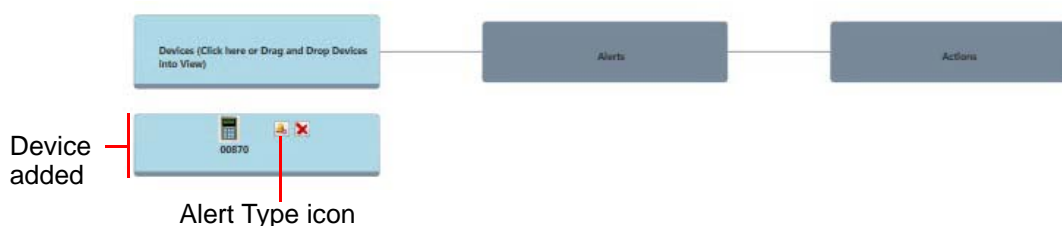


Figure 30 Device added to the Events Setup interface

5. Select the **Select Alert Type** icon (See Figure 30) and choose an alert or alerts from the list displayed.

Note

All alarms can be selected at once by checking the **Select All** checkbox.

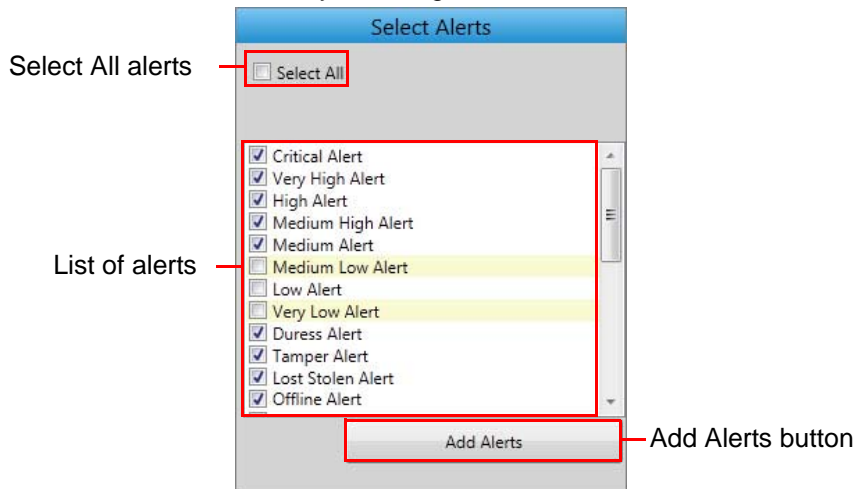


Figure 31 Select Alerts window

6. Select **Add Alerts** button. You can add a single or multiple alerts at once.

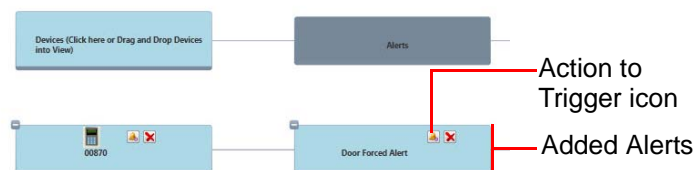


Figure 32 Alerts added to the Events Setup interface

7. Select the **Action to Trigger** icon on added alerts, to display the **Object Selector** window.
8. Select the **Type** of action from the left pane and select the **Object** from the right pane of the **Object Selector** window.

Note

In the example given in this document, the first **Type** was **Display Salvo Action** and the name (**Object**) given to it was **Video Action 1**.

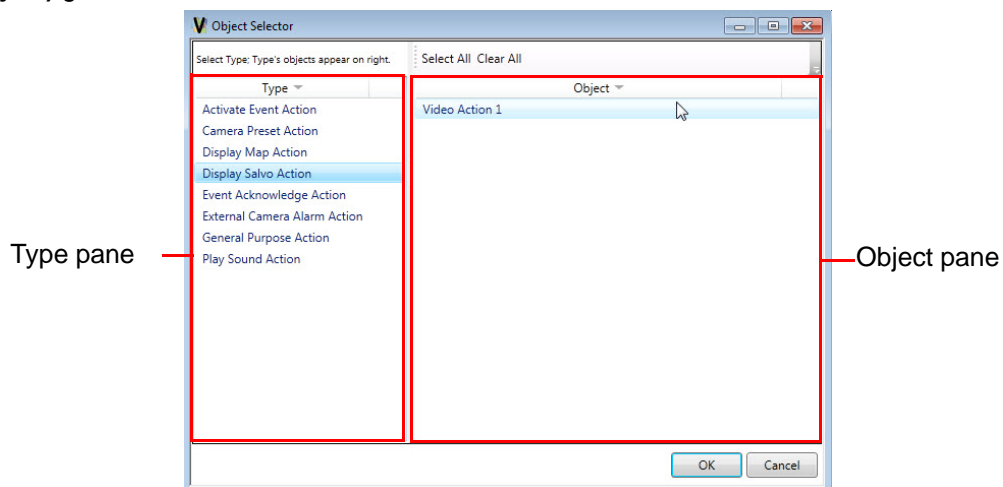


Figure 33 Selecting an Action to Trigger (Display Salvo Action)

- Repeat steps 7 and 8 to add further **Action to Trigger** entries.

Note

The second **Type** used in this document was **Activate Event Action** and the name (**Object**) given to it was **Event 1**. Each **Action to Trigger** must be added separately, i.e. they can not be added at the same time.

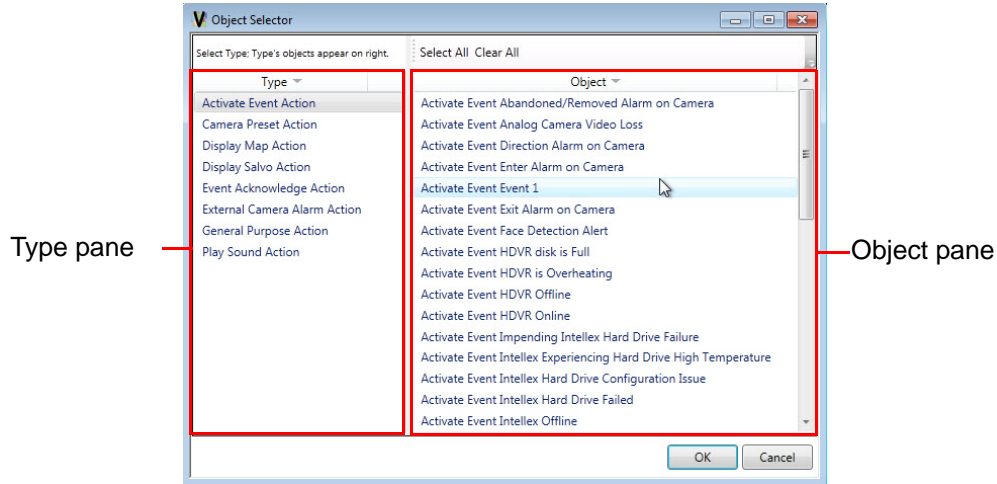


Figure 34 Selecting an Action to Trigger (**Activate Event Action**)

- Select **OK** to confirm selection of each **Action to Trigger**. This automatically closes the **Object Selector** window and returns the user to the Events Setup interface.

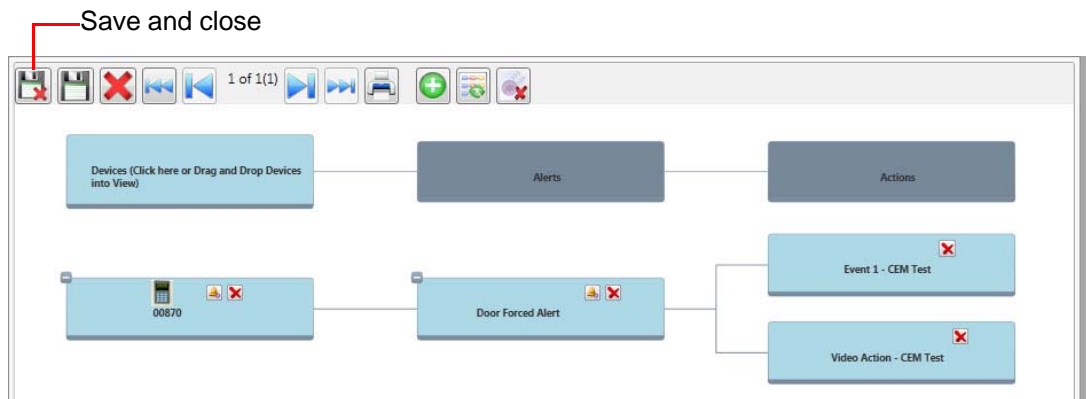


Figure 35 Actions added to the **Events Setup** interface

- Select the **Action to Trigger** icon on the same alarm and repeat steps 7 and 8 until all created Actions are added as necessary.
- Click **Save and Close** on the **Events Setup** interface.

Step 5- Testing the Integration

To test that the integration has been successful, conduct tests such as holding a door open to make sure that it generates an alarm in the **victor Unified Client** (Assumption is made that a Door Held alarm has been configured for the device being tested). The camera footage displayed as a result of the test, must also be checked thoroughly to ensure that the correct cameras have been configured.

Finally check that the generated alarm is displayed on the map, if this is a feature that has been configured. See Appendix B for instructions on mapping readers in **victor Unified Client**

Appendix B: Mapping the Reader (Optional)

Note

Mapping the readers is not an essential step for this integration.

1. From the main **victor Unified Client** interface, select the **Build** tab.

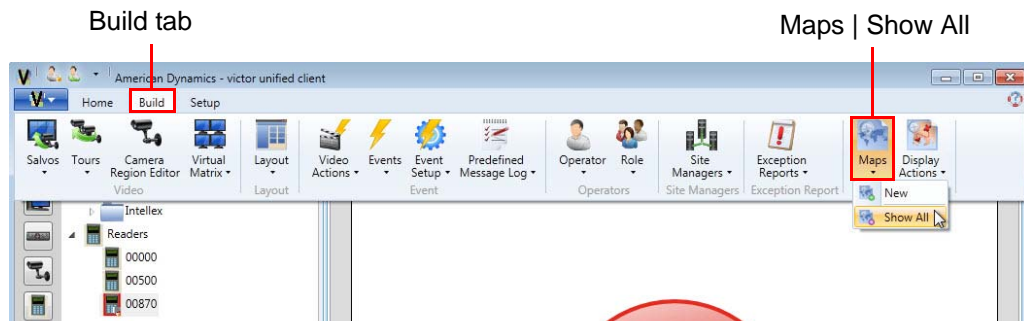


Figure 36 Opening Maps

2. Select the **Maps** drop down list button.
3. Select **Show All** to display the **List of saved maps**.

Note

For the purposes of these instructions, it is assumed that at least one map has already been added. Please refer to **victor** documentation for instructions how to add a new map.

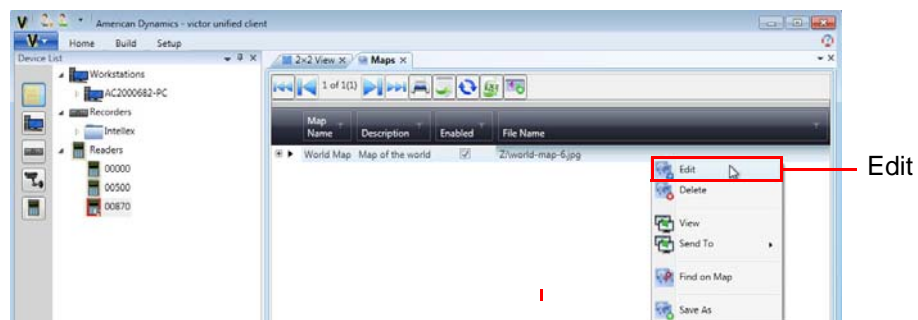


Figure 37 Selecting a map to display

4. Right click on a map in the main pane and click **Edit** from the menu (Assumption is made that a map has already been added). This displays a map editor interface:

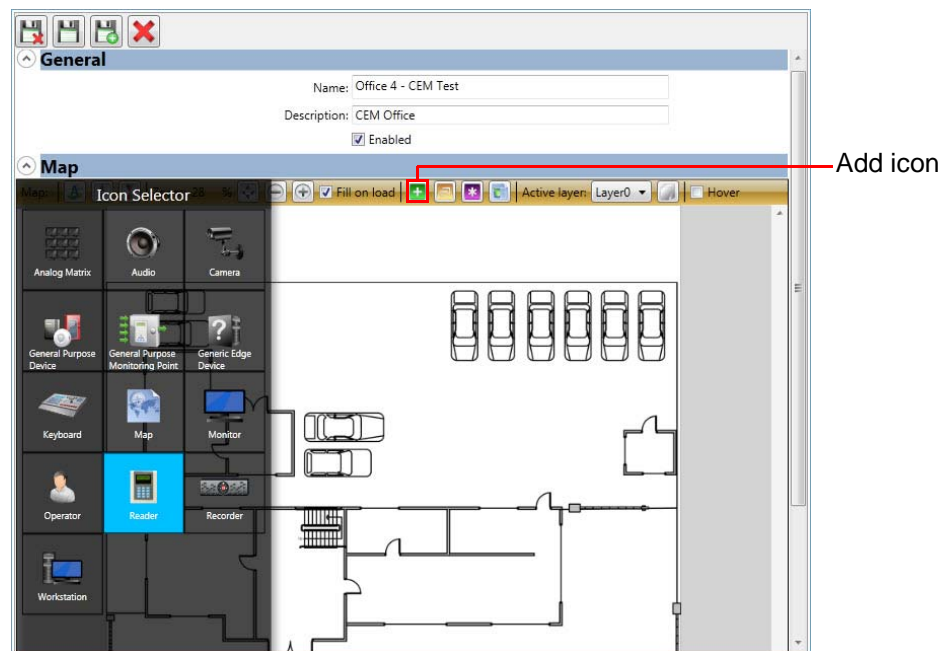


Figure 38 Map editor interface

5. In the **Map** pane:
 - a. Click the **Add** button to display the **Icon Selector** panel.
 - b. Double click the **Reader** button in the **Icon Selector** panel to place a reader icon on the map.
 - c. Drag and drop the reader icon on the appropriate map location.
 - d. Once the icon is in the correct position, right click the placed icon and select **Drop on map**, which opens up a **Icon configuration** pane.

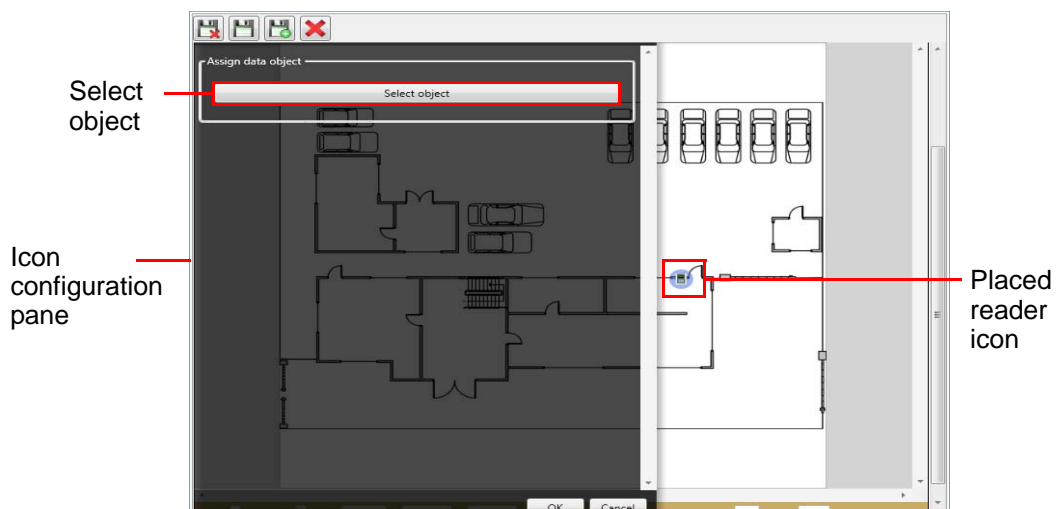


Figure 39 Icon configuration pane

6. In the configuration pane, press **Select object** to display the **Object Selector** window.

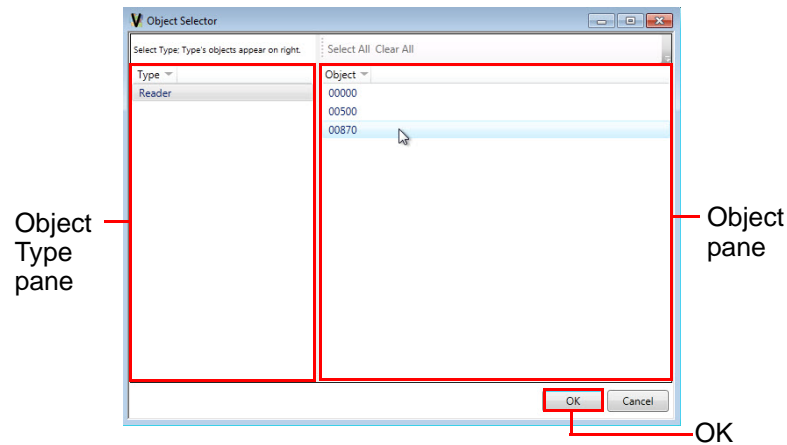


Figure 40 Selecting a device to associate with an icon

7. From the object's **Type** pane, select **Reader**.
8. From the **Object** pane, select the correct reader to associate with the new icon.
9. Click **OK** to return to the **Object configuration pane**.
10. In the **Object configuration pane**, which is now expanded to display multiple options for the new icon; configure **Assign Images**, **Assign alerts**, **Assign dynamic text** and **Assign left-click action**.

Note

Please refer to **victor** documentation for instructions how to configure these icon options.

Appendix C: Upgrading the CEM victor Integration to align with an update to victor version 4.7

Overview

If you are upgrading your **CEM victor Integration** from version 4.6, you must:

- uninstall any previous versions of the integration.
- integrate AC2000 functionality with **victor Unified Client**.
- install a new **CEM victor Integration**.

Uninstalling previous CEM victor Integration version 4.6 or 4.7

To upgrade your **CEM victor Integration**, you must uninstall any previous version of this integration. To uninstall a previous **CEM victor Integration**, do the following:

1. Open the **victor Server Configuration Application**.
2. Click the **Stop** button for **CrossFire Framework Service**. This closes all services. Close the **victor Server Configuration Application**.
3. Uninstall **CEM victor Integration** from Windows **Control Panel**. Reboot the workstation.

Integrating AC2000 functionality with victor Unified Client

You must apply a patch to the AC2000 server to integrate AC2000 functionality into the **victor Unified Client**. To apply this patch, do the following:

1. Open **Internet Explorer**.
2. Log into AC2000 Web.
3. Click **System**.
4. Click **Software Update**.
5. Browse to the **vic_filt71.cpio.bz2** patch.
6. Click **Upload**. The screen displays a confirmation that the upload was successful.

Installing new CEM victor Integration

To install the new **CEM victor Integration**, do the following:

1. Log onto a workstation that has **victor Site Manager** and **victor Unified Client** installed on it.
2. Open the **victor Server Configuration Application**.
3. Click the **Stop** button for **CrossFire Framework Service**. This closes all services. Close the **victor Server Configuration Application**.
4. Install **CEM victor Integration 4.7**. Reboot the workstation.

Note

The **CEM victor Integration** must be licensed through the Victor Licensing application. Please obtain a new license from American Dynamics Technical Support.

End User License Agreement (EULA)

IMPORTANT - READ THIS END-USER LICENSE AGREEMENT ("EULA") CAREFULLY BEFORE OPENING THE DISK PACKAGE, DOWNLOADING THE SOFTWARE OR INSTALLING, COPYING OR OTHERWISE USING THE SOFTWARE.

THIS EULA IS A LEGAL AGREEMENT BETWEEN YOU AND SENSORMATIC ELECTRONICS, LLC ("TYCO"), WHICH SOFTWARE INCLUDES COMPUTER SOFTWARE AND MAY INCLUDE MEDIA, PRINTED MATERIALS, AND "ON-LINE" OR ELECTRONIC DOCUMENTATION (COLLECTIVELY, THE "SOFTWARE"). BY BREAKING THE SEAL ON THIS PACKAGE, DOWNLOADING THE SOFTWARE OR INSTALLING, COPYING OR OTHERWISE USING THE SOFTWARE, YOU AGREE TO BE BOUND BY THE TERMS OF THIS EULA. IF YOU DO NOT AGREE TO ALL OF THE TERMS AND CONDITIONS OF THIS EULA, DO NOT OPEN, DOWNLOAD, INSTALL, COPY OR OTHERWISE USE THE SOFTWARE.

1. SCOPE OF LICENSE. The Software may include computer code, program files and any associated media, hardware or software keys, printed material and electronic documentation. The Software may be provided to you pre-installed on a storage device (the media) as part of a computer system or other hardware or device ("System"). The Software is protected by copyright laws and international copyright treaties, as well as other intellectual property laws and treaties. All title and intellectual property rights in and to the Software (including but not limited to any images, photographs, and text incorporated into the Software), the accompanying printed materials, and any copies of the Software, are owned by Tyco and/or its suppliers. The Software is licensed, not sold. All rights not expressly granted under this EULA are reserved by Tyco and its suppliers.

2. GRANT OF LICENSE. This EULA grants you the following rights on a non-exclusive basis:

a. General. This EULA permits you to use the Software for which you have purchased this EULA. Once you have purchased licenses for the number of copies of the Software that you require, you may use the Software and accompanying material provided that you install and use no more than the licensed number of copies at one time. The Software is only licensed for use with specified Licensor-supplied Systems. If the Software is protected by a software or hardware key or other device, the Software may be used on any computer on which the key is installed. If the key locks the Software to a particular System, the Software may only be used on that System.

b. Locally Stored Components. The Software may include a software code component that may be stored and operated locally on one or more devices. Once you have paid the required license fees for these devices (as determined by Tyco in its sole discretion), you may install and/or use one copy of such component of the Software on each of the devices as licensed by Tyco. You may then use, access, display, run or otherwise interact with ("use") such component of the Software in connection with operating the device on which it is installed solely in the manner set forth in any accompanying documentation or, in the absence of such, solely in the manner contemplated by the nature of the Software.

c. Remotely Stored Components. The Software may also include a software code component for operating one or more devices remotely. You may install and/or use one copy of such component of the Software on a remote storage device on an internal network with all of the devices and may operate such component with each device over the internal network solely in the manner set forth in any accompanying documentation or, in the absence of such, solely in the manner contemplated by the nature of the Software; provided however, you must still acquire the required number of licenses for each of the devices with which such component is to be operated.

d. Embedded Software/Firmware. The Software may also include a software code component that is resident in a device as provided by Tyco for operating that device. You may use such component of the Software solely in connection with the use of that device, but may not retrieve, copy or otherwise transfer that software component to any other media or device without Tyco's express prior written authorization.

e. Backup Copy. You may make a back-up copy of the Software (other than embedded software) solely for archival purposes, which copy may only be used to replace a component of the Software for which you have current valid license. Except as expressly provided in this EULA, you may not otherwise make copies of the Software, including the printed materials.

3. OTHER RIGHTS AND LIMITATIONS. Your use of the Software is subject to the following additional limitations. Failure to comply with any of these restrictions will result in automatic termination of this EULA and will make available to Tyco other legal remedies.

a. Limitations on Reverse Engineering and Derivative Works. You may not reverse engineer, decompile, or disassemble the Software, and any attempt to do so shall immediately terminate this EULA - except and only to the extent that such activity may be expressly permitted by applicable law notwithstanding this limitation. You may not make any changes or modifications to any portion of the Software, or create any derivative works, without the written permission of an officer of Tyco (except as provided in Section 3(f) of this EULA with respect to "open source" software). You may not remove any proprietary notices, marks or labels from the Software. You shall institute reasonable measures to ensure compliance with the terms and conditions of this EULA by your personnel and agents.

b. Copyright Notices. You must maintain all copyright notices on all copies of the Software.

c. Transfer. You may only transfer your rights under this EULA (i) as part of a permanent sale or transfer of all of the devices for which the Software is licensed as applicable; (ii) if you transfer all of the Software (including all component parts, the media and printed materials, any upgrades and this EULA); (iii) if you do not retain any copies of any portion of the Software; (iv) if the recipient agrees to the terms of this EULA; and (v) if the Software is an upgrade, such transfer must also include all prior versions of the Software. You agree that failure to meet all of these conditions renders such transfer null and void.

d. Termination. Without prejudice to any other rights, Tyco may terminate this EULA if you fail to comply with the terms and conditions herein. In such event, you must immediately destroy all copies of the Software and all of its component parts. To the extent the Software is embedded in hardware or firmware, you will provide prompt access to Tyco or its representative to remove or lock Software features or functionality as Tyco determines.

e. Subsequent EULA. Tyco may also supersede this EULA with a subsequent EULA pursuant to providing you with any future component, release, upgrade or other modification or addition to the Software. Similarly, to the extent that the terms of this EULA conflict with any prior EULA or other agreement between you and Tyco regarding the Software, the terms of this EULA shall prevail.

f. Incorporation of "Open Source" and other Third Party Software. Portions of the Software may be subject to certain third party license agreements governing the use, copying, modification, redistribution and warranty of those portions of the Software, including what is commonly known as "open source" software. A copy of each applicable third party license can be found in the file README.TXT or other documentation accompanying the Software. By using the Software you are also agreeing to be bound to the terms of such third party licenses. If provided for in the applicable third party license, you have a right to receive source code for such software for use and distribution in any program that you create, so long as you in turn agree to be bound to the terms of the applicable third party license, and your programs are distributed under the terms of that license. A copy of such source code may be obtained free of charge by contacting your Tyco representative.

g. Trademarks. This EULA does not grant you any rights in connection with any trademarks or service marks of Tyco, its affiliates or its suppliers.

h. Rental. You may not sublicense, rent, lease or lend the Software. You may not make it available to others or post it on a server or web site or otherwise distribute it.

i. Software Keys. The hardware/software key, where applicable, is your proof of license to exercise the rights granted herein and must be retained by you. Lost or stolen keys will not be replaced.

j. Demonstration and Evaluation Copies. A demonstration or evaluation copy of the Software is covered by this EULA; provided that the licenses contained herein shall expire at the end of the demonstration or evaluation period.

k. Registration of Software. The Software may require registration with Tyco prior to use. If you do not register the Software, this EULA is automatically terminated and you may not use the Software.

l. Additional Restrictions. The Software may be subject to additional restrictions and conditions on use as specified in the documentation accompanying such Software, which additional restrictions and conditions are hereby incorporated into and made a part of this EULA.

m. Upgrades and Updates. To the extent Tyco makes them available, Software upgrades and updates may only be used to replace all or part of the original Software that you are licensed to use. Software upgrades and updates do not increase the number of copies licensed to you. If the Software is an upgrade of a component of a package of Software programs that you licensed as a single product, the Software may be used and transferred only as part of that single product package and may not be separated for use on more than one computer or System. Software upgrades and updates downloaded free of charge via a Tyco authorized World Wide Web or FTP site may be used to upgrade multiple Systems provided that you are licensed to use the original Software on those Systems.

n. Tools and Utilities. Software distributed via a Tyco-authorized World Wide Web or FTP site (or similar Tyco-authorized distribution means) as a tool or utility may be copied and installed without limitation provided that the Software is not distributed or sold and the Software is only used for the intended purpose of the tool or utility and in conjunction with Tyco products. All other terms and conditions of this EULA continue to apply.

4. EXPORT RESTRICTIONS. You agree that you will not export, re-export or transfer any portion of the Software, or any direct product thereof (the foregoing collectively referred to as the "Restricted Components"), to IRAN, NORTH KOREA, SYRIA, CUBA and SUDAN, including any entities or persons in those countries, either directly or indirectly ("Tyco's Position"). You also agree that you will not export, re-export or transfer the Restricted Components to any other countries except in full compliance with all applicable governmental requirements, including but not limited to applicable economic sanctions and constraints administered by the U.S. Treasury Department and applicable export control measures administered by the U.S. Department of Commerce and U.S. Department of State, any other U.S. government agencies, and measures administered by the European Union or the government agencies of any other countries. Any violation by you of the applicable laws or regulations of the U.S. or any other government, or where you breach Tyco's Position notwithstanding whether or not this is contrary to any aforementioned applicable laws or regulations, will result in automatic termination of this EULA.

5. U.S. GOVERNMENT RESTRICTED RIGHTS. The Software is Commercial Computer Software provided with "restricted rights" under Federal Acquisition Regulations and agency supplements to them. Any use, duplication or

disclosure by the U.S. Government is subject to restrictions as set forth in subparagraph (c)(1)(ii) of the Rights in Technical Data and Computer Software clause at DFAR 255.227-7013 et. seq. or 252.211-7015, or subparagraphs (a) through (d) of the Commercial Computer Software Restricted Rights at FAR 52.227-19, as applicable, or similar clauses in the NASA FAR Supplement. Contractor/manufacturer is Sensomatic Electronics, LLC, 6 Technology Park Drive, Westford, MA 01886.

6.LIMITED WARRANTY.

a.Warranty. Tyco warrants that the recording medium on which the Software is recorded, hardware key, and the documentation provided with it, will be free of defects in materials and workmanship under normal use for a period of ninety (90) days from the date of delivery to the first user. Tyco further warrants that for the same period, the Software provided on the recording medium under this license will substantially perform as described in the user documentation provided with the product when used with specified hardware. THE FOREGOING EXPRESS WARRANTY REPLACES AND IS IN LIEU OF ALL OTHER WARRANTIES OR CONDITIONS, WHETHER EXPRESS, IMPLIED, OR STATUTORY, INCLUDING BUT NOT LIMITED TO, ANY IMPLIED OR OTHER WARRANTIES OF MERCHANTABILITY, FITNESS FOR A PARTICULAR PURPOSE, TITLE, NON-INFRINGEMENT OR NON-MISAPPROPRIATION OF INTELLECTUAL PROPERTY RIGHTS OF A THIRD PARTY, CUSTOM, TRADE, QUIET ENJOYMENT, ACCURACY OF INFORMATIONAL CONTENT, OR SYSTEM INTEGRATION. TYCO MAKES NO WARRANTY THAT ANY PORTION OF THE SOFTWARE WILL OPERATE ERROR-FREE, FREE OF ANY SECURITY DEFECTS OR IN AN UNINTERRUPTED MANNER. TYCO SHALL NOT BE RESPONSIBLE FOR PROBLEMS CAUSED BY CHANGES IN THE OPERATING CHARACTERISTICS OF THE DEVICE(S) UPON WHICH THE SOFTWARE IS OPERATING, OR FOR PROBLEMS IN THE INTERACTION OF THE SOFTWARE WITH NON-TYCO SOFTWARE OR HARDWARE PRODUCTS. TYCO NEITHER ASSUMES NOR AUTHORIZES ANY OTHER PERSON PURPORTING TO ACT ON ITS BEHALF TO MODIFY OR TO CHANGE THIS WARRANTY, NOR TO ASSUME FOR IT ANY OTHER WARRANTY OR LIABILITY CONCERNING THIS SOFTWARE. THE WARRANTY MADE BY TYCO MAY BE VOIDED BY ABUSE OR MISUSE. THIS LIMITED WARRANTY GIVES YOU SPECIFIC LEGAL RIGHTS. YOU MAY HAVE OTHER RIGHTS UNDER MANDATORY LAW THAT VARY FROM STATE TO STATE AND COUNTRY TO COUNTRY.

b.Exclusive Remedy. Tyco's entire liability and your exclusive remedy under the warranty set forth in this Section 6 will be, at Tyco's option, to (i) attempt to correct Software errors with efforts Tyco believes suitable to the problem, (ii) replace at no cost the recording medium, Software or documentation with functional equivalents as applicable, or (iii) refund a pro-rated portion of the license fee paid for such Software (less depreciation based on a five-year life expectancy) and terminate this EULA, provided, in each case, that Tyco is notified in writing of all warranty problems during the applicable warranty period. Any replacement item will be warranted for the remainder of the original warranty period. No remedy is provided for failure of the Software if such failure is the result of accident, abuse, alteration or misapplication with respect to the Software or any hardware on which it is loaded. Warranty service or assistance is provided at the original point of purchase.

7.LIMITATION OF LIABILITY & EXCLUSION OF DAMAGES.

a.LIMITATION OF LIABILITY. IN NO EVENT WILL TYCO'S AGGREGATE LIABILITY (INCLUDING, BUT NOT LIMITED TO, LIABILITY FOR NEGLIGENCE, STRICT LIABILITY, BREACH OF CONTRACT, MISREPRESENTATION AND OTHER CONTRACT OR TORT CLAIMS) ARISING FROM OR RELATED TO THIS EULA, OR THE USE OF THE SOFTWARE, EXCEED THE GREATER OF USD\$5.00 OR THE AMOUNT OF FEES YOU PAID TO TYCO OR ITS RESELLER FOR THE SOFTWARE THAT GIVES RISE TO SUCH LIABILITY. BECAUSE AND TO THE EXTENT THAT SOME JURISDICTIONS DO NOT ALLOW THE EXCLUSIONS OR LIMITATIONS OF LIABILITY ABOVE, THESE MAY NOT APPLY TO YOU.

b.EXCLUSION OF OTHER DAMAGES. UNDER NO CIRCUMSTANCES SHALL TYCO OR ANY OF ITS RESELLERS OR LICENSORS BE LIABLE FOR ANY OF THE FOLLOWING: (I) THIRD PARTY CLAIMS; (II) LOSS OR DAMAGE TO ANY SYSTEMS, RECORDS OR DATA, OR LIABILITIES RELATED TO A VIOLATION OF AN INDIVIDUAL'S PRIVACY RIGHTS; OR (III) INDIRECT, INCIDENTAL, SPECIAL, CONSEQUENTIAL, PUNITIVE, RELIANCE, OR COVER DAMAGES (INCLUDING LOST PROFITS AND LOST SAVINGS), IN EACH CASE EVEN IF TYCO HAS BEEN ADVISED OF THE POSSIBILITY OF SUCH DAMAGES. YOU ARE SOLELY RESPONSIBLE AND LIABLE FOR VERIFYING THE SECURITY, ACCURACY AND ADEQUACY OF ANY OUTPUT FROM THE SOFTWARE, AND FOR ANY RELIANCE THEREON. SOME JURISDICTIONS DO NOT ALLOW THE EXCLUSION OF INCIDENTAL OR CONSEQUENTIAL DAMAGES, OR THE LIMITATION ON HOW LONG AN IMPLIED WARRANTY LASTS, SO SOME OF THE ABOVE LIMITATIONS MAY APPLY TO YOU ONLY TO THE EXTENT PERMITTED BY THOSE LAWS.

8.GENERAL. If any provision of this EULA is found to be unlawful, void, or for any reason unenforceable, then that provision shall be severed from this EULA and shall not affect the validity and enforceability of the remaining provisions. You should retain proof of the license fee paid, including model number, serial number and date of payment, and present such proof of payment when seeking service or assistance covered by the warranty set forth in this EULA. This EULA is governed by the laws of the State of New York, without regards to its conflicts of law principles. The parties hereby irrevocably agree that they submit themselves to the personal jurisdiction of the state and federal courts of New York for purposes of resolving any and all disputes arising under or related to these terms and conditions. The parties specifically exclude the application of the provisions of the United Nations Convention on Contracts for the International Sale of Goods.